







# Design-led engineering. Global collective of specialists.

## PHILOSOPHY

We believe in creating a better built environment for future generations. Our focus is delivering solutions to improve the quality and sustainability of today's buildings. This vision is shared with our parent company, Egis, who seek to create a sustainable future.

## OUR TEAM

Inhabit is a specialist consulting practice with a multi-skilled team of professionals who understand local markets while drawing on global experience.

## COMMITMENT

Inhabit is committed to addressing social and environmental issues in the work we do every day. Conducting business with integrity and fostering a safe, healthy and diverse workplace is crucial to producing the high quality of work we are proud of.

350+

team members  
globally

22

international  
locations

150+

cities we have  
worked in globally

10+

years of design  
and engineering

3k+

consulting  
projects

1k+

ongoing  
partnerships



# Services

## SKIN

Façade Consulting | Façade Engineering

## SENSE

Net Zero | Building Physics | Sustainability

## SIGHT + SOUND

Venue Planning | Acoustics | Audio Visual

## LIGHT

Architectural Lighting | Daylighting  
Stage + Theatre Lighting | Bespoke Luminaires

## CARE

Access + Maintenance | Building Maintenance Units

## PROCURE

Procurement Consulting | Quality Assurance + Quality Control

## TRANSFORM

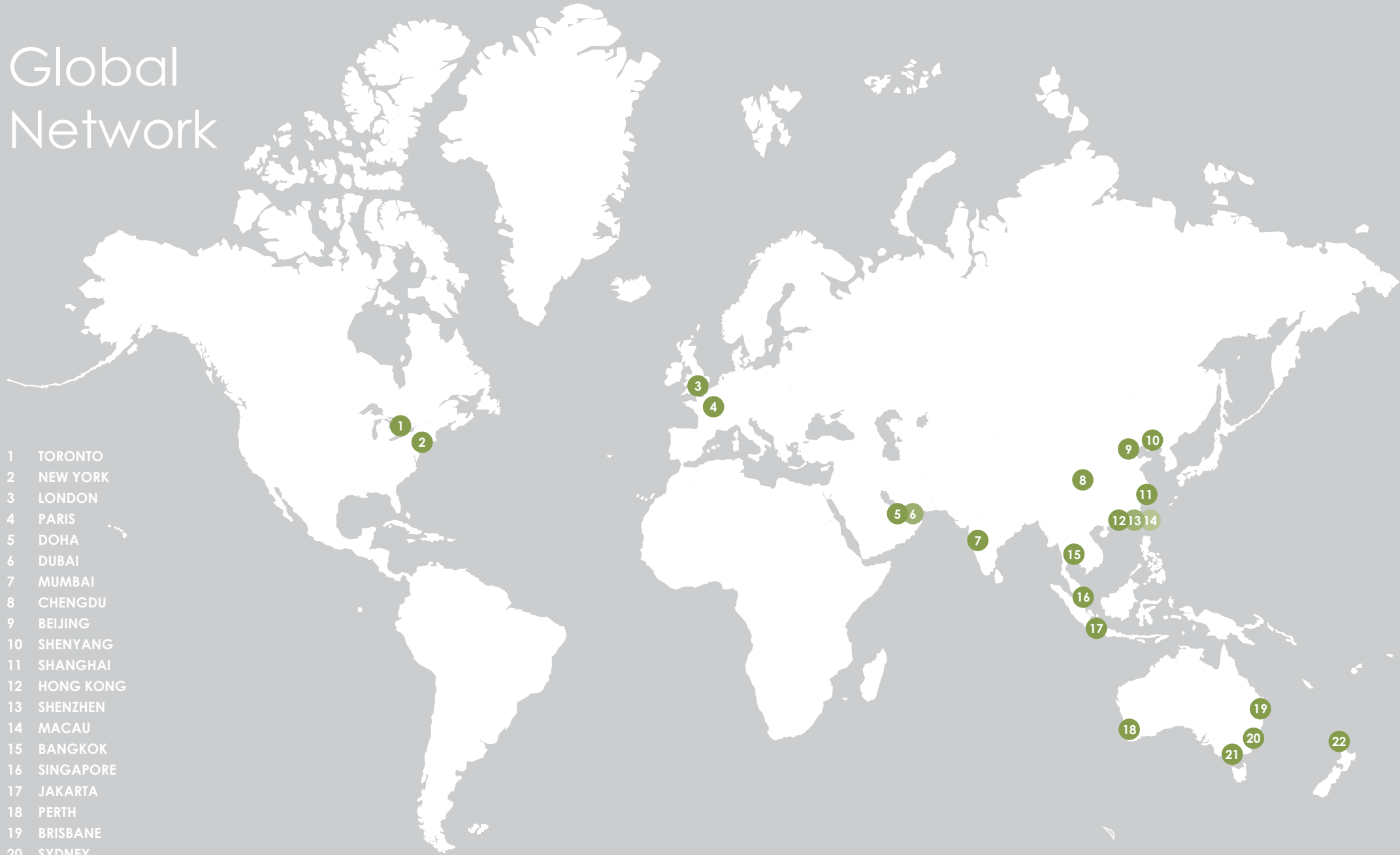
3D Modelling | Computational Design | BIM | Shop Drawings

## HEAL

Investigation + Diagnostic | Repair + Restoration  
Façade Refurbishment + Upgrade | Recladding

# Global Network

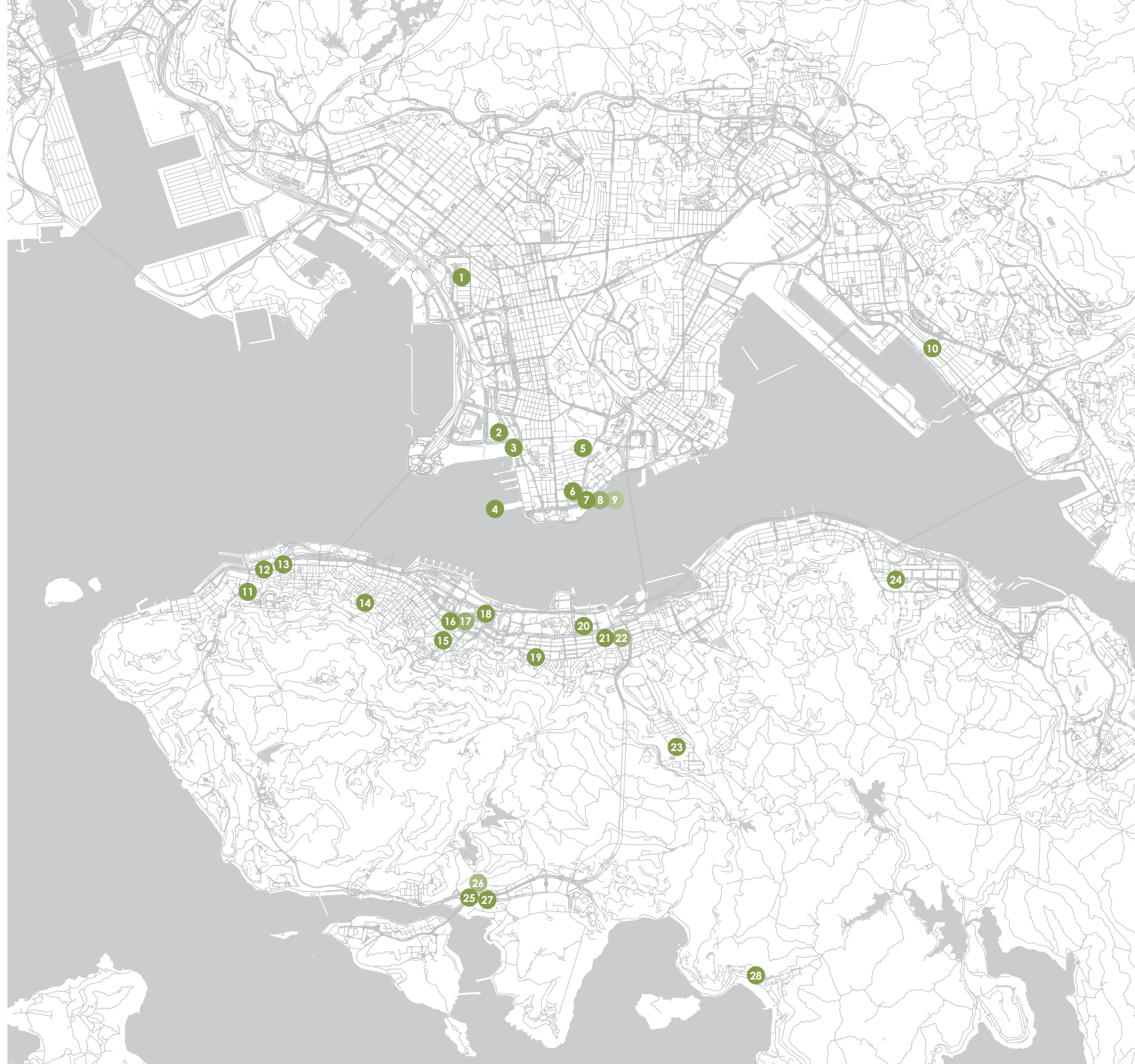
- 1 TORONTO
- 2 NEW YORK
- 3 LONDON
- 4 PARIS
- 5 DOHA
- 6 DUBAI
- 7 MUMBAI
- 8 CHENGDU
- 9 BEIJING
- 10 SHENYANG
- 11 SHANGHAI
- 12 HONG KONG
- 13 SHENZHEN
- 14 MACAU
- 15 BANGKOK
- 16 SINGAPORE
- 17 JAKARTA
- 18 PERTH
- 19 BRISBANE
- 20 SYDNEY
- 21 MELBOURNE
- 22 AUCKLAND





# Selected Projects

- 1 MADISON PARK
- 2 WEST KOWLOON STATION
- 3 XIQU CENTRE
- 4 OCEAN TERMINAL EXTENSION
- 5 ICEBERG
- 6 H ZENTRE
- 7 K11 MUSEA PODIUM
- 8 K11 TUBULAR FAÇADE
- 9 FORTNUM AND MASON
- 10 INTERNATIONAL TRADE TOWER
- 11 NOVUM WEST
- 12 UPTON
- 13 181 CONNAUGHT ROAD
- 14 ALASSIO
- 15 MURRAY BUILDING
- 16 HERMÈS PRINCES BUILDING
- 17 CORPORATE SUITES
- 18 CHINA CONSTRUCTION BANK
- 19 THE LUNA
- 20 ST REGIS HOTEL
- 21 INHABIT HONG KONG
- 22 THE HARI HOTEL
- 23 HONG KONG JOCKEY CLUB NEW CLUBHOUSE
- 24 THE GREAT ROOM
- 25 SOUTH ISLAND PLACE
- 26 GLOBAL TRADE SQUARE
- 27 VERTICAL SQUARE
- 28 DE RICOU SERVICED APARTMENTS



# Meet the team

## **INHABIT** **HONG KONG**

Inhabit's people are passionate about creating a better built environment. They are not afraid to explore and think outside the box. Their experience and expertise is Inhabit's greatest strength.

Hugh Brennand



Jovi Wong



Dickson Wong



Ken Wong



Patrick Hung



Leigh Reimann



Marius Mariano



Agnes Hung



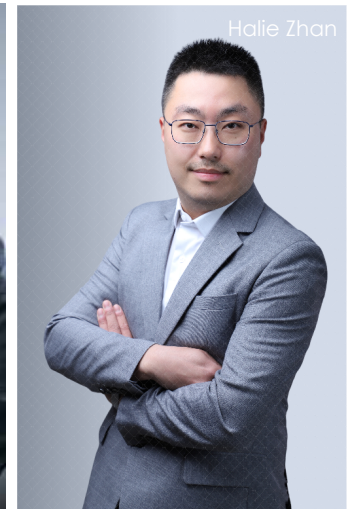
Vincent Ng



Jason Paget



Halie Zhan







# Commercial Projects





## CHINA CONSTRUCTION BANK TOWER

This stunning office tower is located on one of the most prominent sites in Hong Kong on the harbour waterfront. Inhabit designed two large BMU's either side of a central LED display. Inhabit also provided services for the façade contractor including value engineering for the building façade and assisting with the Hong Kong Buildings Department certification. The project was completed in 2013.

|           |  |
|-----------|--|
| INHABIT   | Façade Engineering   Access + Maintenance<br>Façade Consultant to Contractor |
| DEVELOPER | Lai Sun   China Construction Bank  |
| ARCHITECT | AEDAS  |

CENTRAL, HONG KONG





## SOUTH ISLAND PLACE

Inhabit was involved from the design to the completion stage, also performing onsite and factory inspection to closely monitor the façade installation for the client. A unitized system has been designed to allow good thermal performance, cost efficiency and fast installation. Inhabit worked closely with the architect to develop two typologies using different types of glass and coatings as well as external features.

|           |  |
|-----------|--|
| INHABIT   | Façade Consulting   Access + Maintenance |
| DEVELOPER | Swire Properties                         |
| ARCHITECT | AGC Design                               |

WONG CHUK HANG, HONG KONG









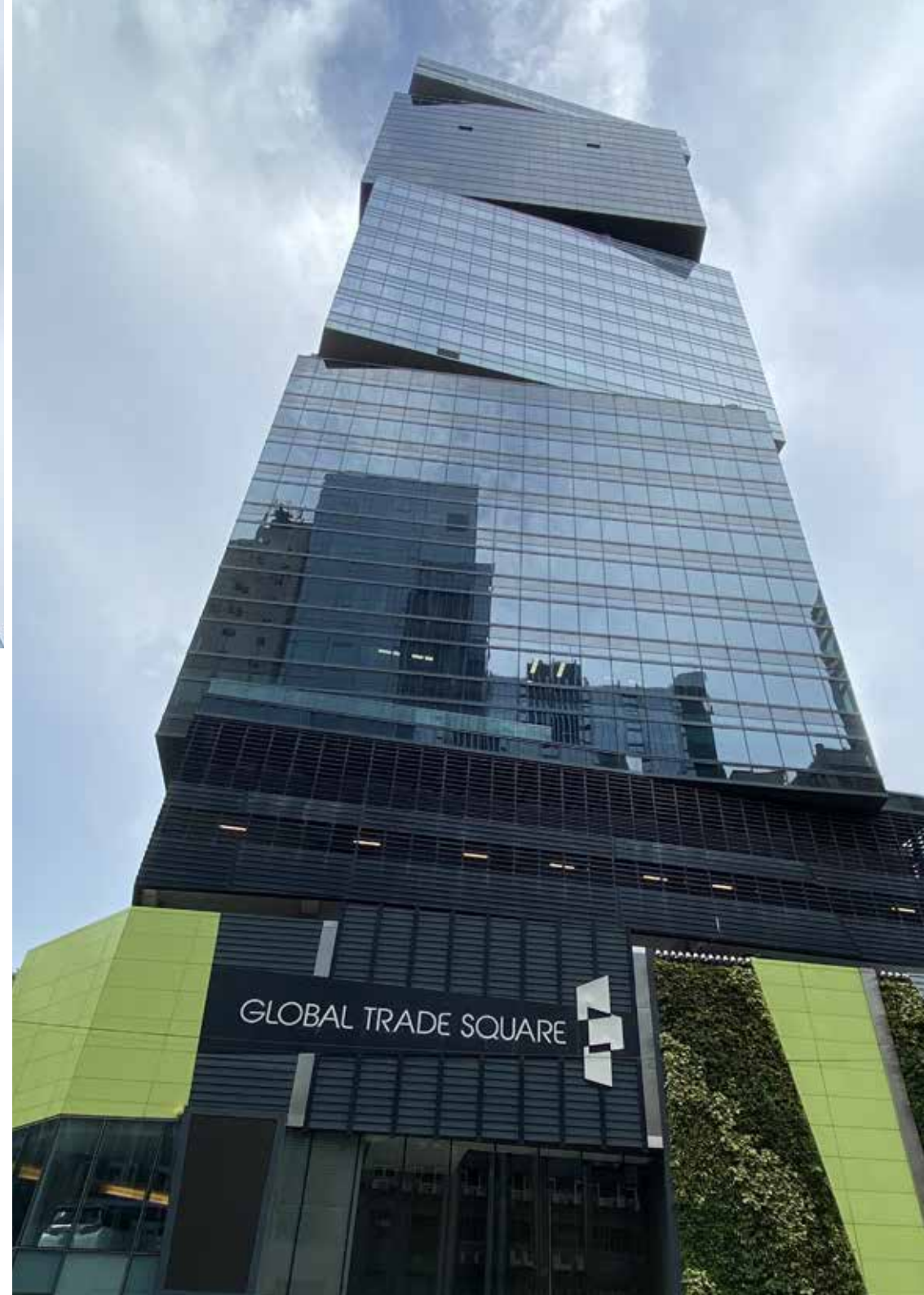
## SCIENCE PARK EXPANSION STAGE 1

A twin-tower development providing Research & Development offices and laboratory facilities for start-up companies in the integrated circuit (IC) technology sector. The design concept across two towers and a podium, emphasizes the transformational role of the Science Park.

|           |                                     |
|-----------|-------------------------------------|
| INHABIT   | Façade Consulting                   |
| DEVELOPER | Hong Kong Science & Technology Park |
| ARCHITECT | Wong Tung & Partners                |

SCIENCE PARK, HONG KONG





## GLOBAL TRADE SQUARE

The building is a single office tower of 141m comprising 33–storeys with a podium area. The main façade systems include unitised curtain wall and aluminum cladding system. Inhabit provided full process façade consulting including design, specification, tender and shop drawing review and construction supervision.

|           |                        |
|-----------|------------------------|
| INHABIT   | Façade Consulting      |
| DEVELOPER | Henderson Land         |
| ARCHITECT | Lu Tang Lai Architects |

WONG CHUK HANG, HONG KONG





## H-ZENTRE

A 20-storey tower purpose built for the health and wellness industry with two levels of retail podium. The façade is a unitized curtain wall with an aluminium feature, with tiled aluminium back pan to create a special lighting effect. The external façade LED display is approx. 20m width x 80m in height.

|           |  |
|-----------|--|
| INHABIT   | Façade Consulting                          |
| DEVELOPER | Henderson Land Development Company Limited |
| ARCHITECT | Wong & Ouyang                              |

TSIM SHA TSUI, HONG KONG





## VERTICAL SQUARE

A development, with a 131m office building, consisting of 36 storeys. The main façade systems include unitised curtain wall and aluminium cladding system. Inhabit provided full process façade consulting including design, specification, tender, shop drawing review and construction supervision. Inhabit also provided a Building Department submission package for a unitised curtain wall system.

|           |                    |
|-----------|--------------------|
| INHABIT   | Façade Consulting  |
| DEVELOPER | K Wah Real Estates |
| ARCHITECT | Aedas Hong Kong    |

WONG CHUK HANG, HONG KONG





## INTERNATIONAL TRADE TOWER

As Hong Kong's subtropical climate involves more than 200 hours of sunshine per month, this tower's facade has been fitted with external louvres that are aligned with the position of the sun so that solar energy gains can be reduced by up to 30 per cent. Inhabit provided façade consulting including design, specification, tender, shop drawing review and construction supervision.

|           |   |
|-----------|---|
| INHABIT   | Façade Consulting   |
| DEVELOPER | Mapletree   |
| ARCHITECT | Ingenhoven Architects (Concept)<br>Wong Tung & Partners (Project) |

KWUN TONG, HONG KONG





## INHABIT HONG KONG

The lighting design for Inhabit's Hong Kong Office features an arrangement of practical and informal lighting to generate a workplace with character, whilst being welcoming and user focused. A combination of direct and indirect lighting, controlled by automated daylighting sensors, provides the workstations with appropriate task lighting with giving a greater sense of height and space throughout. A selection of unique wall and suspended luminaires were used to give circulation areas, meeting rooms and the breakout area a more relaxed atmosphere that can be adapted to suit a variety of user requirements.

INHABIT            Interior Design | Lighting Design  
PHOTOS            Brian Zhang

WAN CHAI, HONG KONG







# Hospitality Projects









## MURRAY HOTEL

The renovation and refurbishment of this listed 1960s building by architects Foster + Partners extends the life of this iconic Hong Kong building, at the same time introducing a new function to meet the changing demands of the city. In the original design the windows are recessed and carefully oriented to minimise the effect of the city's intense sub-tropical sunlight on the building's solar load.

|           |   |
|-----------|---|
| INHABIT   | Façade Consulting   Access + Maintenance  |
| DEVELOPER | Harbour City Estates Ltd   Wharf Holdings |
| ARCHITECT | Foster + Partners                         |
| PHOTOS    | Brian Zhang                               |

CENTRAL, HONG KONG











## OCEAN TERMINAL EXTENSION

Commercial development of a new 4-storey extension at the Ocean Terminal. One of the major challenges was the movement of the marine deck due to tidal changes and berthing cruise ships requiring the base of the façade to be released in all directions through the introduction of a 'floating deck' to transfer the load back to the columns.

|           |  |
|-----------|--|
| INHABIT   | Façade Consulting   Building Physics<br>Access + Maintenance |
| CLIENT    | Harbour City Estates Ltd   Wharf Holdings                    |
| ARCHITECT | Foster + Partners  |
| PHOTOS    | Foster + Partners  |

KOWLOON, HONG KONG





## THE GREAT ROOM

Designed to offer amenity space and flexible office solutions, the Great Room is a co-working space. Inhabit's Hong Kong Lighting Team worked in close collaboration with architects to develop bespoke detailing and lighting features which are carefully positioned to generate a welcoming feel with a balanced level of drama and functional light.

|           |                            |
|-----------|----------------------------|
| INHABIT   | Specialist Lighting Design |
| CLIENT    | CBRE Pte. Ltd.             |
| DEVELOPER | The Great Room             |
| ARCHITECT | Hassell Studio             |
| PHOTOS    | Brian Zhang                |

QUARRY BAY, HONG KONG





## SHERATON + FOUR POINTS BY SHERATON

A Marriott International with twin wings radiating from a central tower. The stick curtain wall features glass fins with patch and the curved glass wall has a radius of around 3 metres. The podium façade has a golden curved metal feature and a canopy with metal cladding and glass panel.

INHABIT  
CLIENT  
ARCHITECT

Façade Consulting | Lighting Design  
Shimao Property Holdings Ltd.  
Dennis Lau & Ng Chun Man Architects  
& Engineers (HK) Ltd.

TUNG CHUNG, HONG KONG





## SWIRE TRAINING CENTRE

A two-storey building designed for staff development for the Swire Group. Built around a central courtyard, the project is designed for sunshine angles that maximise natural lighting and shading. The project aims for BEAM Plus Platinum Rating with the installation of a rainwater recycling system and PV panels to generate electricity.

|           |                               |
|-----------|-------------------------------|
| INHABIT   | Façade Consulting             |
| DEVELOPER | Swire Properties              |
| ARCHITECT | LWK + PARTNERS                |
| PHOTOS    | LWK + PARTNERS (Digital only) |

LANTAU ISLAND, HONG KONG









THE HARI





## THE HARI HOTEL

A 5-star hotel with a clean, organised lighting aesthetic that generates a sense of luxury whilst being practical and user friendly. The lighting has been meticulously programmed to provide a series of lighting scenes that are aligned with the daily operations of each space and align with the expectations of high-end hospitality.

|                 |                           |
|-----------------|---------------------------|
| INHABIT         | Lighting Design           |
| CLIENT          | Harilela Group            |
| ARCHITECT       | Atkins                    |
| INTERIOR DESIGN | Tara Bernerd              |
| INTERIOR PHOTOS | Dennis Lo   Steven Ko     |
| EXTERIOR PHOTO  | Kris Provoost Photography |

WAN CHAI, HONG KONG





## 181 CONNAUGHT ROAD

A boutique hotel with a façade lighting concept focused on 3 primary features: to generate a sense of allure, give a subtle, dynamic movement and have an integrated aesthetic. Shimmering sunlight reflected of the ocean's surface provided inspiration for a lighting effect that gives a sense of warmth and allure from many vantage points around and on the harbour. The Lighting and Façade teams developed a highly integrated design using custom luminaire with a tinted lens to give a clean appearance during the daytime.

|           |                                      |
|-----------|--------------------------------------|
| INHABIT   | Lighting Design   Façade Engineering |
| CLIENT    | Liu Chong Hing Investment Ltd.       |
| ARCHITECT | K.A.Kho & Associates                 |
| PHOTOS    | Brian Zhang                          |

SAI WAN, HONG KONG













## HONG KONG JOCKEY CLUB NEW CLUBHOUSE

The tower facade is a unitized curtain wall system in a saw-tooth arrangement which features staggered 750mm deep 'floating' vertical fins offset from the glass surface, supported by stainless steel brackets top and bottom. Limestone and various finishes of granite were used to clad the podium portion of the building.

|           |  |
|-----------|--|
| INHABIT   | Façade Consulting   Access + Maintenance   |
| DEVELOPER | The Hong Kong Jockey Club                  |
| ARCHITECT | Wong & Ouyang (HK) Ltd   Inarc Design Asia |

HAPPY VALLEY, HONG KONG





## ST REGIS HOTEL

A 25-storey hotel with a total GFA of 99,000sqm. The building's façade features lightweight triangular aluminium plates. The variations in the angle of the metal cladding reflect sunlight during the day and the city's night lights in the evening.

|           |  |
|-----------|--|
| INHABIT   | Façade Consulting   Access + Maintenance |
| DEVELOPER | China Resources Property Limited         |
| ARCHITECT | DLN Architects Limited                   |

WAN CHAI, HONG KONG





## RITZ CARLTON & J.W. MARIOTT, GALAXY RESORT

This project is comprised of an extension of the existing Galaxy Casino complex, with the 4-storey podium area increased to allow an additional 160m hotel tower to sit upon it. The project features various façade access and maintenance systems, ranging from rooftop BMUs to bespoke rope access davit arms to access the many protruding features and recess areas.

|           |  |
|-----------|--|
| INHABIT   | Façade Consulting   Access + Maintenance |
| DEVELOPER | Galaxy Entertainment Group               |
| ARCHITECT | Steelman Partners   Wong & Ouyang Ltd.   |
| PHOTO     | Lino Airoso (Top Right)   Amanda Wong    |

COTAI STRIP, MACAU









## STUDIO CITY

This development comprises a large podium on which eight towers of varying heights between 133m and 157m are located in a semi-circle with a range of façade systems. The towers are divided into two halves joined by an elevated ferris wheel and metal cladding. Multiple façade access and maintenance solutions are used, with trackless BMUs and davit trolleys to suit the spatial requirements of the different roofs.

|           |  |
|-----------|--|
| INHABIT   | Façade Consulting   Access + Maintenance |
| DEVELOPER | Melco Resorts & Entertainment            |
| ARCHITECT | Leigh and Orange                         |
| PHOTO     | Lino Airoso (Top left)   Amanda Wong     |

COTAI STRIP, MACAU











## THE PARISIAN

The Parisian Macao has a façade primarily made up of unitized curtain wall supporting GRC cladding and windows. The façade has a large number of intricate details and mouldings. Inhabit's role involved peer review of the facade design, access and maintenance consultancy and resident site and factory supervision services (RSS).

|           |  |
|-----------|--|
| INHABIT   | Façade Consulting   Access + Maintenance |
| DEVELOPER | Venetian Macau                           |
| ARCHITECT | Aedas                                    |
| PHOTOS    | Amanda Wong                              |

COTAI STRIP, MACAU









# Cultural + Education Projects







## SHAW AUDITORIUM, HONG KONG UNIVERSITY OF SCIENCE AND TECHNOLOGY

The lighting design for the auditorium has been developed in close collaboration with Henning Larsen to create a collection of clean and neat detailing which augments architectural features and geometry, whilst providing flexibility for a variety of operational modes.

INHABIT                      Façade Consulting | Lighting Design  
ARCHITECT                  Henning Larsen  
PHOTOS                      Kris Provoost, courtesy of Henning Larsen

HONG KONG, PEOPLE'S REPUBLIC OF CHINA









## XIQU CENTRE

A seven-storey musical complex for Xiqu (Chinese opera) performances. The outer skin of the building is a modular system of curved aluminium slats arranged in wavy patterns. These form a curtain around the building invoking theatre curtains drawn back at each of the corners on the ground floor to form entrances.

|           |  |
|-----------|--|
| INHABIT   | Shop Drawings   Building Department Design   |
| CLIENT    | Hip Hing Engineering                         |
| DEVELOPER | West Kowloon Cultural District               |
| ARCHITECT | Bing Thom Architects<br>Ronald Lu + Partners |
| PHOTOS    | Kris Provoost                                |

TSIM SHA TSUI, HONG KONG







## WEST KOWLOON STATION

An underground terminus for 80,100 passengers daily, the building has a 3-dimensional roof structure with associated glass façade systems. The cleaning and access requirements internally are most challenging due to the high ceilings and geometry. The overall structure is highly irregular in shape and is made up of long span steel trusses with huge differential movements and tolerances.

|           |  |
|-----------|--|
| INHABIT   | Façade Consulting   Access + Maintenance |
| CLIENT    | Leighton Gammon Joint Venture            |
| DEVELOPER | MTR Corporation                          |
| ARCHITECT | AEDAS                                    |
| PHOTOS    | Kris Provoost Photography                |

WEST KOWLOON, HONG KONG









## FRENCH INTERNATIONAL SCHOOL

Setting an example in sustainability, the form of the building and façade designs are optimized in response to the local climate and to decrease energy consumption and increase comfort by passive means. The playful façade of the gymnasium incorporates colour and glass blocks made of precast concrete. A continuous seal is included at the inside and outside of the panel perimeter to optimise air and water-tightness to the building.

|           |                             |
|-----------|-----------------------------|
| INHABIT   | Façade Consulting           |
| CLIENT    | French International School |
| ARCHITECT | Henning Larsen              |
| PHOTOS    | Philippe Ruault             |

TSEUN KWAN O, HONG KONG





# Retail Projects







## K11 MUSEA PODIUM

A 10-storey podium on this iconic Victoria Harbour development has a façade crafted from Portuguese limestone and curtain wall juxtaposed with 4,600sqm green walls. These terraces cascade down the stepped façade which maximizes natural light at ground level.

|           |                       |
|-----------|-----------------------|
| INHABIT   | Façade Consulting     |
| CLIENT    | Min Metals            |
| DEVELOPER | New World Development |
| ARCHITECT | Ronald Lu & Partners  |

KOWLOON, HONG KONG









## K11 TUBULAR FAÇADE

A unique façade of 307 glass tubes creates an architectural point of difference on the podium of a US\$ 2.6 billion remodelled development. The tube façade consists of 307 tubes made of laminated safety glass, 238 half and 69 full tubes with a height of 9m and 900mm diameter. The half-tubes are connected with aluminium profiles fitted with a polished duplex-stainless steel lid (base and top) fixed with structural silicone.

|           |                       |
|-----------|-----------------------|
| INHABIT   | Façade Consulting     |
| CLIENT    | Seele Hong Kong Ltd.  |
| DEVELOPER | New World Development |
| ARCHITECT | Ronald Lu & Partners  |

KOWLOON, HONG KONG





## FORTNUM AND MASON, K11 MUSEA

Food and lifestyle brand Fortnum & Mason's flagship retail store in K11 Musea, pays homage to the company's roots in England, taking the theme from the original store located at 181 Piccadilly in London. The two-story outlet blends the original store's Georgian design influences with eastern influences. Inhabit's scope included shopfronts, façades, doors, cladding and the integration of signage and greenwall.

INHABIT  
CLIENT  
ARCHITECT

Façade Consulting | Façade Engineering  
Big Cat Group Ltd.  
MBDS

TSIM SHA TSUI, HONG KONG





## HERMÈS PRINCES BUILDING

The façade of the Hermès store in the centre of Hong Kong was inspired by bamboo scaffolding construction techniques, wrapping the building in copper-coloured anodised aluminium tubes. This, in combination with extensive glass used on both façades suffuses the store with a golden light.

INHABIT                      Façade Consulting | Façade Engineering  
CLIENT                        Hermès Asia Pacific  
ARCHITECT                     RDAI Architects

CENTRAL, HONG KONG









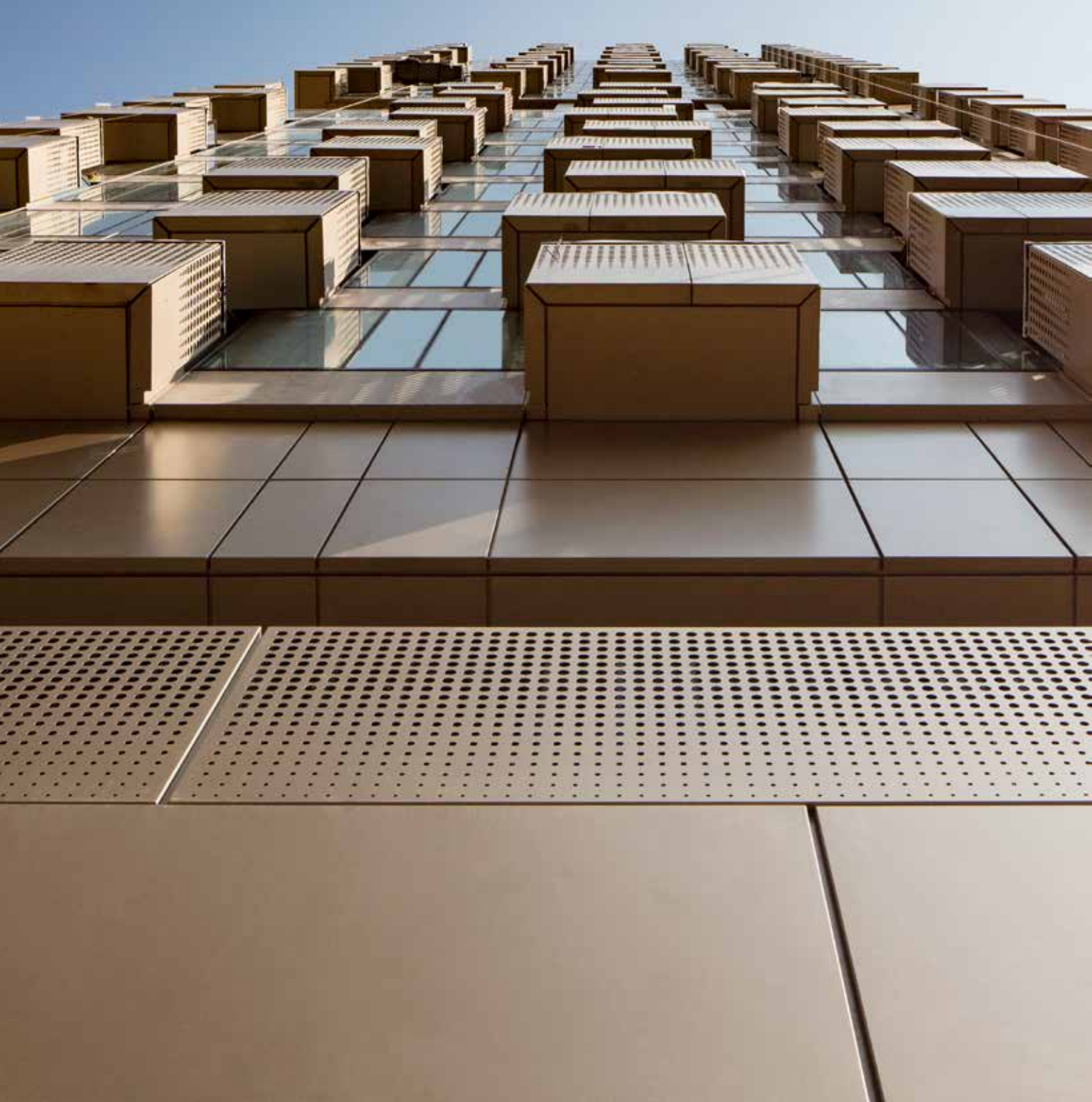
## ICEBERG, 68 KIMBERLEY ROAD

Taking inspiration from the forms of glaciers Iceberg, Ginza-type mall, stands out against the surrounding concrete buildings in the heart of Tsim Sha Tsui. Integrated lighting features combine with the striking and sharp diffused lines of light at the entry area, generating a unique outcome within a densely built-up area of Hong Kong.

|           |                            |
|-----------|----------------------------|
| INHABIT   | Lighting Design            |
| CLIENT    | Henderson Land Development |
| ARCHITECT | ARK Associates             |
| PHOTOS    | Edmon Leong                |

TSIM SHA TSUI, HONG KONG





# Residential Projects





## THE LUNA

A single 31-storey residential tower with 3 levels of commercial podium made up of an array of façade systems. Both tower and podium are clad in powder-coated aluminium rainscreen panels, with balconies covering the north and west elevations.

|           |                   |
|-----------|-------------------|
| INHABIT   | Façade Consulting |
| DEVELOPER | Vanke Property    |
| ARCHITECT | Make Architects   |
| PHOTOS    | Make Architects   |

WAN CHAI, HONG KONG





## MADISON PARK

A 24-storey residential tower featuring a stick curtain wall system with concealed windows and designed with no corner mullions. The podium features limestone cladding with a glass patch fixing signboard above the building entrance.

|           |   |
|-----------|---|
| INHABIT   | Façade Consulting   Access + Maintenance      |
| DEVELOPER | Elite Land Development Limited c/o Sino Group |
| ARCHITECT | Lu Tang Lai Architects Ltd.                   |

SHAM SHUI PO, KOWLOON







## DE RICOU SERVICED APARTMENTS

The De Ricou apartments feature an interior that is fluid and sculptural. Lighting has been integrated into the folds of the interior so that the light sources are imperceptible and the shapes and contours of the architecture are accentuated. The use of downlights has been reduced to a carefully selected few, and only where necessary, in order to keep the interior clean with few markings. The ceiling of the lobby features an illuminated oculus to highlight the timber finish and create an impression of daylight beyond.

|           |                                     |
|-----------|-------------------------------------|
| INHABIT   | Façade Consulting   Lighting Design |
| DEVELOPER | Hong Kong & Shanghai Hotels         |
| ARCHITECT | David Clovers                       |
| PHOTOS    | David Clovers                       |

REPULSE BAY, HONG KONG





## NOVUM WEST

This residential development has a tower curtainwall composed of a semi-unitised stick system with integrated sliding doors for access to the balconies and a homogenous aspect of the façade. The podium curtain wall is a semi-unitised stick system with folding and sliding doors fully integrated into the façade. The shopfront at ground floor is a structural glass wall supported by glass fins.

|           |  |
|-----------|--|
| INHABIT   | Façade Consulting                                    |
| DEVELOPER | Henderson Land Development                           |
| ARCHITECT | Integrated Design Associates LTD<br>VIA Architecture |

QUEEN'S ROAD WEST, HONG KONG







## UPTON

Inhabit was engaged to carry out elevation design, façade consultancy and external lighting consultancy on this residential tower. The team introduced features that wrap around each floor and spiral up the tower. The parabolic transitions between the vertical and horizontal planes result in a smooth blend of light and shade.

|           |                                     |
|-----------|-------------------------------------|
| INHABIT   | Façade Consulting   Lighting Design |
| DEVELOPER | Emperor Group                       |
| ARCHITECT | DCL                                 |

SHEK TONG TSUI, HONG KONG





## ALASSIO

A 50-storey residential tower comprising 197 apartments, the building maximizes the view of the city's skyline and Victoria Harbour with the use of "pleats" on the exteriors. Glass windows and balconies allow an abundance of natural light into the apartments. Built with eco-friendly materials, a reduced impact on micro-climate and improved acoustic performance, the project has achieved the BEAM Plus Final Platinum rating.

|           |                   |
|-----------|-------------------|
| INHABIT   | Façade Consulting |
| DEVELOPER | Swire Properties  |
| ARCHITECT | DLN               |

MID-LEVELS, HONG KONG



# Asia Projects







## WANGJING SOHO

Three curved asymmetric towers designed as inter-weaving mountains by UK-based architect Zaha Hadid fuse building and landscape. Featuring curved and tapered forms, the main façade systems include a unitized curtain wall system with stepped aluminium cladding of slab. The slab cladding was custom designed to vary in height, width and depth. Cold-bending technology was successfully adopted to achieve the smooth curvature of the aluminium strips while achieving savings.

|           |   |
|-----------|---|
| INHABIT   | Façade Consulting<br>Access + Maintenance             |
| DEVELOPER | SOHO China  |
| ARCHITECT | Zaha Hadid<br>China Construction Design International |

BEIJING, PEOPLE'S REPUBLIC OF CHINA





## CHANGSHA INTERNATIONAL FINANCE SQUARE

Two skyscrapers soar above a prominent mixed-use development in the heart of Changsha, Hunan, creating a distinctive landmark on the city skyline. It is the tallest building in Changsha with a total GFA of about 980,000 sqm. Inhabit's teams from the Hong Kong, Beijing, Chengdu and Shanghai offices collaborated as façade consultants on the project.

|           |                                   |
|-----------|-----------------------------------|
| INHABIT   | Façade Consulting                 |
| DEVELOPER | Wharf Holdings                    |
| ARCHITECT | Wong Tung & Partners Ltd.   Benoy |
| PHOTOS    | Wharf Holdings                    |

CHANGSHA, PEOPLE'S REPUBLIC OF CHINA









## TENCENT SEAFRONT TOWER

Designed to achieve LEED NC Gold certification, Tencent's headquarters is a vertical campus contained in two towers positioned and rotated to help minimise direct exposure to the sun, as well as capture prevailing winds and aiding ventilation. The unitised curtain wall façade includes glare and solar heat gain control systems and incorporates a modular shading system that adjusts according to the degree of sun exposure.

|           |                       |
|-----------|-----------------------|
| INHABIT   | Façade Consulting     |
| DEVELOPER | Tencent Holdings Ltd. |
| ARCHITECT | NBBJ                  |
| PHOTOS    | Terrence Zhang        |

SHENZHEN, PEOPLE'S REPUBLIC OF CHINA





## UNILEVER HEADQUARTERS

The headquarters of the world's largest transnational consumer goods company was designed to be true to the Unilever brand and the Indonesian culture. In collaboration with the client and the architect, Inhabit developed a series of unique lighting features and solutions to create a workplace which is vibrant, distinctive, efficient and functional.

|                 |   |
|-----------------|---|
| INHABIT         | Façade Consulting   Lighting   Acoustics<br>Access + Maintenance   Building Physics |
| DEVELOPER       | Unilever Indonesia  |
| ARCHITECT       | AEDAS   |
| INTERIOR DESIGN | AEDAS INTERIORS   |
| PHOTOS          | Owen Raggett   AEDAS  |

JAKARTA, INDONESIA







## MENARA ASTRA HEADQUARTERS

This premium grade A commercial tower standing at 261m in height has a Platinum Green Mark Rating from BCA Singapore. The façade includes high performance unitised curtain wall systems, large-span glass façades, twin cantilevered wing wall structures and a complex 3-dimensional geometric crown structure.

INHABIT

Façade Consulting | Acoustics  
Access + Maintenance

DEVELOPER

Astra International

ARCHITECT

Nikken Sekkei

JAKARTA, INDONESIA













## GRAND THEATRE OPERA HOUSE

This opera house building seamlessly blends in with nature and the topography of the surrounding wetlands, appearing as if sculpted by wind and water. The active skin of the building comprises four dancing ribbons and free-form curved skylights allowing a high level of natural daylight and energy saving. The dancing ribbons are clad with a double curved 5mm aluminium panel fixed to a Kalzip standing seam underlay.

|           |                           |
|-----------|---------------------------|
| INHABIT   | Façade Consulting         |
| DEVELOPER | Harbin Government         |
| ARCHITECT | MAD Architects            |
| PHOTOS    | Kris Provoost Photography |

HARBIN, PEOPLE'S REPUBLIC OF CHINA





PHOTO Brian Zhang

W | [inhabitgroup.com](http://inhabitgroup.com)  
E | [contact@inhabitgroup.com](mailto:contact@inhabitgroup.com)  
@ | f | in | [@inhabitgroup](https://www.instagram.com/inhabitgroup)