





# Design-led solutions. Global collective of specialists.

## PHILOSOPHY

We believe in creating a better built environment for future generations. Our focus is delivering solutions to improve the quality and sustainability of today's buildings. This vision is shared with our parent company, Egis, who seek to create a sustainable future.

## OUR TEAM

Inhabit is a specialist consulting practice with a multi-skilled team of professionals who understand local markets while drawing on global experience.

## COMMITMENT

Inhabit is committed to addressing social and environmental issues in the work we do every day. Conducting business with integrity and fostering a safe, healthy and diverse workplace is crucial to producing the high quality of work we are proud of.

350+

team members  
globally

21

international  
locations

150+

cities we have  
worked in globally

10+

years of design  
and engineering

3k+

consulting  
projects

1k+

ongoing  
partnerships



# Services

## SKIN

Façade Consulting | Façade Engineering

## SENSE

Net Zero | Building Physics | Sustainability

## SIGHT + SOUND

Venue Planning | Acoustics | Audio Visual

## LIGHT

Architectural Lighting | Daylighting  
Stage + Theatre Lighting | Bespoke Luminaires

## CARE

Access + Maintenance | Building Maintenance Units

## PROCURE

Procurement Consulting | Quality Assurance + Quality Control

## TRANSFORM

3D Modelling | Computational Design | BIM | Shop Drawings

## HEAL

Investigation + Diagnostic | Repair + Restoration  
Façade Refurbishment + Upgrade | Recladding

# Global Network

- 1 NEW YORK
- 2 LONDON
- 3 PARIS
- 4 DOHA
- 5 DUBAI
- 6 MUMBAI
- 7 CHENGDU
- 8 BEIJING
- 9 SHENYANG
- 10 SHANGHAI
- 11 HONG KONG
- 12 SHENZHEN
- 13 MACAU
- 14 BANGKOK
- 15 SINGAPORE
- 16 JAKARTA
- 17 PERTH
- 18 BRISBANE
- 19 SYDNEY
- 20 MELBOURNE
- 21 AUCKLAND



# Our People

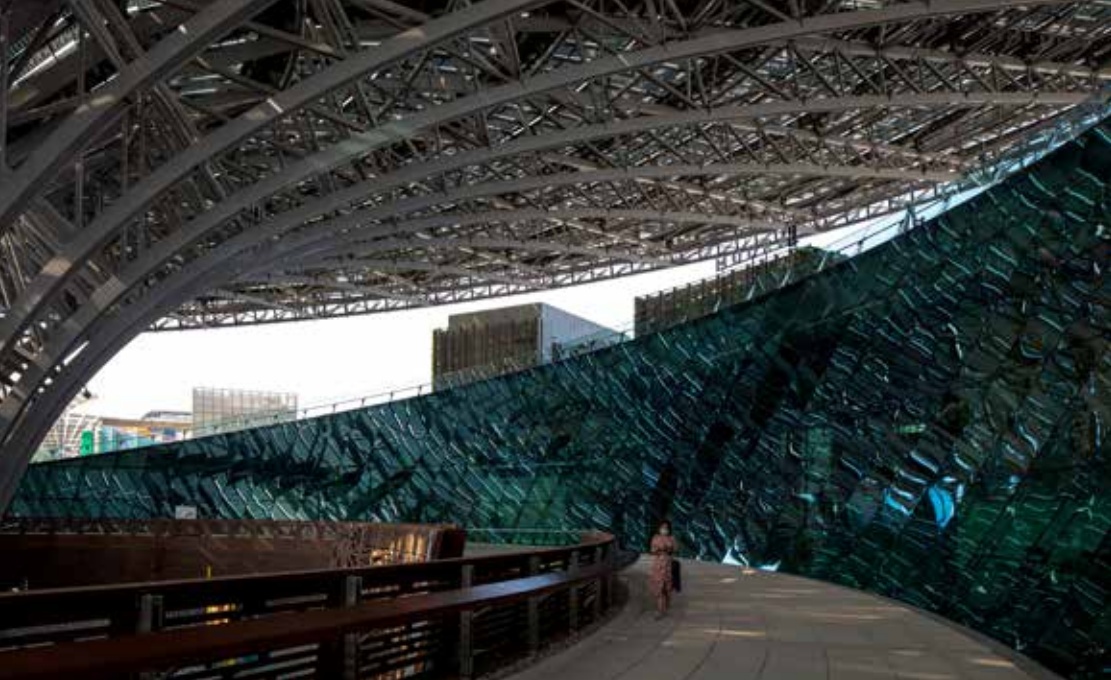
Inhabit comprises a collection of passionate and talented professionals from a variety of cultures and backgrounds including architecture, engineering, interior design, product design, theatre and music. This diversity equips us with the ability to think outside the box which is reinforced with comprehensive technical rigour, skilful project leadership and diligent organisational skills.

PHOTO Ales Vyslouzil Photography



# Projects





## SUSTAINABILITY PAVILION

A pavilion Expo 2020 Dubai topped with a 130m wide, solar-panel-covered main roof canopy that funnels down into a central courtyard. The scope included the main internal courtyard and lobby entrances where the cable façade spanned over glazed vestibules. Inhabit was also appointed to design and engineer the jacking system for tensioning the cables, and for site supervision during installation and testing.

INHABIT	Façade Consulting
CLIENT	JML Façades   ASGC Group Premier Composite Technologies (PCT)
ARCHITECT	Grimshaw Architects
PHOTOS	Ales Vyslouzil Photography (Top L + R)

DUBAI, UNITED ARAB EMIRATES





## AL WASL TOWERS

Twin office towers framing Al Wasl Plaza, a central hub for Expo 2020 Dubai. The twin 10-13 storey towers' façades include stepped unitised curtain walls and stick curtain walls and canopies. Following Expo 2020 Dubai the buildings will be converted into hotels and other commercial uses, complementing the entire mixed-use legacy of the Expo site.

INHABIT

CLIENT

ARCHITECT

PHOTOS

Façade Engineering

JML

Adrian Smith | Gordon Gill Architecture

Ales Vyslouzil Photography

DUBAI, UNITED ARAB EMIRATES





## THE RESIDENCES AT MARINA GATE

Three residential towers designed by Aedas, with façades that are largely glazed, standing out from the traditional towers of the Marina. With a lightweight and transparent feel, the building envelope is clean and elegant during the day, shaded with mesh fins that reflect the adjacent water, and is transformed into a lit sculpture at night.

INHABIT	Façade Consulting
CLIENT	ALEC Engineering and Contracting L.LC
ARCHITECT	Aedas
PHOTOS	Ales Vyslouzil Photography

DUBAI, UNITED ARAB EMIRATES





## LUXEMBOURG PAVILION

An Expo 2020 Dubai Pavilion with a double-skin PTFE membrane system double curved and tensioned over a steel grid shell. Inhabit provided geometry checking of the membrane form and steel structure, access and maintenance consulting in the design stages and façade consulting during construction and acoustic and scenography design components to the pavilion.

INHABIT	Façade Consulting   Acoustics Access + Maintenance
CLIENT	WME
ARCHITECT	Metaform Architects
PHOTOS	Ales Vyslouzil Photography

DUBAI, UNITED ARAB EMIRATES



## UAE PAVILION

Inspired by a falcon in flight, this iconic pavilion sits at the heart of Expo 2020 Dubai. Inhabit provided façade and building maintenance consulting for the pavilion's operable roof structure and the Oculus skylight which is integrated within the roof of the pavilion. Inhabit's acoustics team provided studies into all acoustic aspect of the building.

INHABIT	Façade Consulting   Acoustics Access + Maintenance
CLIENT	WME
ARCHITECT	Santiago Calatrava
PHOTOS	Ales Vyslouzil Photography

DUBAI, UNITED ARAB EMIRATES







## CITY WALK

An urban precinct with hundreds of exclusive shops, restaurants and leisure activities set among 34 low-rise residential buildings. The façades included stick curtain walls, 3D Glass Reinforced Concrete (GRC) rainscreen cladding, dichroic glass fin façade, aluminium rainscreen cladding, stone rainscreen, media screen systems and canopies. A series of retail frontages have a dichroic glass façade.

INHABIT	Façade Consulting
CLIENT	Aecom   WSP
ARCHITECT	Benoy   HKR Architects
PHOTOS	Ales Vyslouzil Photography

DUBAI, UNITED ARAB EMIRATES



ROXY



## AL HABTOOR TOWERS

Part of the AE\$11 billion Al Habtoor City development, the project includes two 73-storey towers, a 52-storey tower and a 7-storey podium. The towers' feature crowns are dominant in the skyline with the Building Maintenance Unit centrally placed between the crown elements. Inhabit provided façade and BMU consultancy services from concept to tender deliverables.

INHABIT  
CLIENT  
ARCHITECT  
PHOTO

Façade Consulting | Access + Maintenance  
Atkins  
Atkins  
Ales Vyslouzil Photography (left)

DUBAI, UNITED ARAB EMIRATES



## AL FATTAN SKY TOWERS

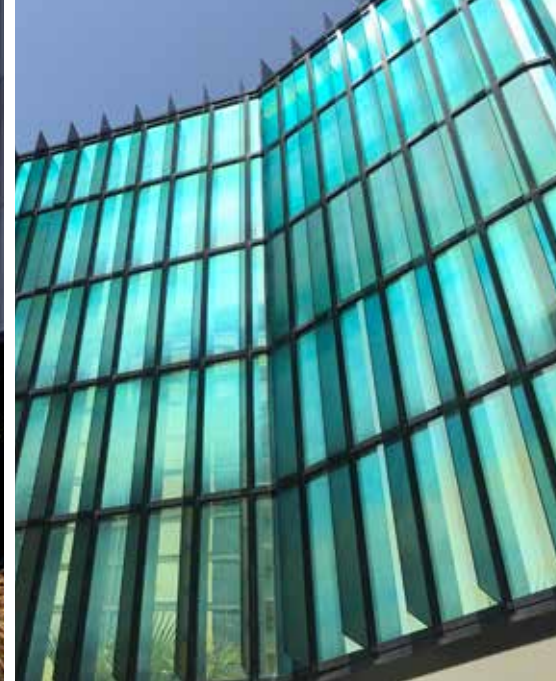
Twin 20-storey residential towers with a façade comprising a glazed, unitized curtain wall with staggered balconies that form a matrix pattern. The building is located in an otherwise low-rise area, and due to the orientation, the glazed projecting balconies catch the light at sunset. Inhabit provided façade design services from concept to tender.

INHABIT	Façade Consulting
CLIENT	Al Fattan Properties
ARCHITECT	AE7
PHOTOS	Ales Vyslouzil Photography

DUBAI, UNITED ARAB EMIRATES







## BLUEWATERS

Inhabit was engaged to provide façade consultancy for design and construction support for 29 retail and food and beverage buildings on this island. Fifteen types of façades were used in this project including kinetic façade, mirror stainless steel, dichromatic and cast U channel glass, coloured interlayer glazed systems, expanded mesh, and ceramic, GRC, core ten and stone rainscreens.

INHABIT	Façade Consulting
CLIENT	Mirage- Leisure and Development
ARCHITECT	Woods Bagot
PHOTOS	Ales Vyslouzil Photography

DUBAI, UNITED ARAB EMIRATES







## SKY VENTURE

The form of this skydiving wind tunnel and climbing wall, consists of a complex mega-triangle secondary skin which was developed parametrically. Inhabit provided façade design, parametric modelling and secondary steel structural design. The secondary skin's design sees 121 mega-triangles supported by 35 beams per mega triangle and 4300 beams all up; no two triangles were the same.

INHABIT	Façade Consulting
CLIENT	Aecom
ARCHITECT	Aecom
PHOTOS	Ales Vyslouzil Photography

ABU DHABI, UNITED ARAB EMIRATES



## DUBAI INTERNATIONAL FINANCIAL CENTRE GATEWAY AVENUE

An enclosed spine links Dubai International Financial Centre (DIFC) buildings and hotels through a retail precinct. The roof has three feature gateways that act as access nodes into the retail spine below and are made with cast glass, one-way spanning onto a steel sub-frame. Inhabit provided façade and BMU design services from concept to tender.

INHABIT	Façade Consulting   Access + Maintenance
CLIENT	RMJM Architects
ARCHITECT	RMJM Architects
PHOTO	Ales Vyslouzil Photography (top left)

DUBAI, UNITED ARAB EMIRATES





## DOHA METRO – MSHEIREB AND EDUCATION CITY STATIONS

The Doha Metro is one of the most advanced driverless metro systems in the world. Inhabit's Specialist Lighting Team worked in collaboration to provide technical input and coordination for implementing the unique lighting concept for the stations. The design process also adopted a unique approach due to the complex geometries of the interior and completely custom-built luminaires.

INHABIT	Lighting Design
CLIENT	OneWorks
ARCHITECT	UNStudio
PHOTOS	Nigel Downes

DOHA, QATAR



## < PALM TOWER

Palm Tower is a 52-storeyed residential development in the heart of Palm Jumeirah. The tower comprises a residential complex and five-star St Regis hotel. The façade is unitised curtain wall with a distinctive fluted crown element. Inhabit provided façade and access and maintenance consulting for schematic, detailed design and tender and façade consulting for construction support.

INHABIT	Façade Consulting Access + Maintenance
CLIENT	RSP
ARCHITECT	RSP
PHOTOS	Ales Vyslouzil Photography

DUBAI, UNITED ARAB EMIRATES

## BOULEVARD CRESCENT >

A dual-tower residential development on Mohammed bin Rashid Boulevard, comprised of the main tower at 47 storeys, and a second tower of 25 storeys. The towers are positioned on an elevated podium with retail frontage along the boulevard. TBC façade of stick curtain wall with GRC and stone rainscreen. Inhabit provided façade consulting for schematic, detailed design, tender, and construction support.

INHABIT	Façade Consulting
CLIENT	BSBG
ARCHITECT	BSBG
PHOTO	Ales Vyslouzil Photography

DUBAI, UNITED ARAB EMIRATES





## BOULEVARD HEIGHTS

A twin-tower residential development on Mohammed bin Rashid Boulevard with a 52-storey tower 223m high and a 47-storey tower standing at 190m. The tower facades are unitised and semi-unitised curtain wall system with feature aluminium fluted bands and stone and GRC rainscreen cladding. Inhabit provided façade consulting for schematic, detailed design, tender, and construction support.

INHABIT	Façade Consulting
CLIENT	Perkins and Will
ARCHITECT	Perkins and Will
PHOTOS	Ales Vyslouzil Photography

DUBAI, UNITED ARAB EMIRATES





## DIFC GRAND MOSQUE

Situated at Gate Avenue, Dubai International Financial Centre (DIFC), this modern mosque is a fusion of traditional and contemporary design, inspired by the traditional Mashrabiya screen element of Islamic architecture. The building's simple form is enveloped by a screen with graduated perforations, allowing light to filter into the interior. Inhabit provided façade consulting for the project.

INHABIT	Façade Consulting
CLIENT	RMJM
ARCHITECT	RMJM
PHOTO	Ales Vyslouzil Photography

DUBAI, UNITED ARAB EMIRATES





## GALLERIA MALL

The expansion of the Galleria Al Maryah Island Mall. A US\$1bn project, this is Abu Dhabi's super-regional shopping centre with luxury retail, restaurants and entertainment complexes. The project's façades include glazed shopfronts, profiles GRC, rainscreen cladding and glazed skylights. Inhabit provided façade consulting for construction support including technical reviews and site and factory inspections.

INHABIT	Façade Consulting
CLIENT	Aecom
ARCHITECT	Aecom
PHOTOS	Ales Vyslouzil Photography

ABU DHABI, UNITED ARAB EMIRATES



## ALOFT CITY CENTRE DEIRA HOTEL

A14-storey city centre hotel with a LEED gold rating. Inhabit provided façade, acoustics and access and maintenance consulting including, concept and schematic design with tender documentation. At construction stage Inhabit reviewed sub-contractor technical submittals, visual mockup and site inspections. The acoustic elements of the project presented some challenging internal noise requirements.

INHABIT	Façade Consulting   Acoustics Access + Maintenance
CLIENT	Majid Al Futtaim
ARCHITECT	Pascal + Watson
PHOTO	Ales Vyslouzil Photography

DUBAI, UNITED ARAB EMIRATES



## DUBAI ARENA

With a capacity of 17,000, this is the largest multi-purpose indoor arena in the region. Climate control throughout the building means it supports events even in the summer. The façade is faceted unitised curtain wall with an inline aluminium extrusion lighting feature to illuminate the building with changing colours at night. Inhabit provided third-party technical review of construction.

INHABIT	Façade Consulting
CLIENT	ASCG
ARCHITECT	Populous
PHOTOS	Ales Vyslouzil Photography

DUBAI, UNITED ARAB EMIRATES



## MOHAMED BIN RASHID LIBRARY

Designed to resemble an open book on a lectern, this seven-storey library will house more than 4.5 million books, one of the world's largest electronic libraries, as well as book conservation facilities. The façade comprises inclined electrochromatic glass in a stick system with GRP rainscreen cladding on the standing seam. Inhabit provided third-party technical review of construction.

INHABIT	Façade Consulting
CLIENT	ASGC
ARCHITECT	Architekten Stuttgart   ACG Architecture Obermeyer Planen+Beraten Munich
PHOTO	Ales Vyslouzil Photography

DUBAI, UNITED ARAB EMIRATES



## AL KHAWANEJ MALL AND ROXY CINEMA

A retail mall with a state-of-the-art, six-screen cinema. Inhabit provided cinema acoustic design and plant and machinery (MEP) acoustic and vibration design. The acoustic team also provided completion testing for the Cinema spaces to confirm the construction achieved the acoustic design targets.

INHABIT	Acoustic Consulting
CLIENT	Engineers Office   Meraas.
ARCHITECT	RMJM
PHOTO	Ales Vyslouzil Photography

DUBAI, UNITED ARAB EMIRATES





## MUSEUM OF THE FUTURE

A living museum designed to celebrate human achievement and innovation. Inhabit provided façade consulting for the 220m long bridge linking to the Dubai Metro station and the secondary bridge linking the museum to Emirates Towers. Inhabit's Acoustics team provided Exhibition Acoustic design to the project fitout.

INHABIT	Façade Consulting   Access + Maintenance
CLIENT	Buro Happold
ARCHITECT	Killa Design
PHOTO	Ales Vyslouzil Photography

DUBAI, UNITED ARAB EMIRATES



## INDOOR ROLLER COASTER

Dubai Hills Mall is home to the fastest indoor roller coaster in Dubai. The façade of the building comprises triangulated units on a primary steel diagrid structure with isolation pads between steel and façade to prevent the transfer of the rollercoaster vibration into the façade. Inhabit provided consulting for schematic, detailed design, tender, including BIM deliverables, and construction support.

INHABIT	Façade Consulting   Access + Maintenance
CLIENT	Cundall
ARCHITECT	Cundall
PHOTO	Ales Vyslouzil Photography

DUBAI, UNITED ARAB EMIRATES



